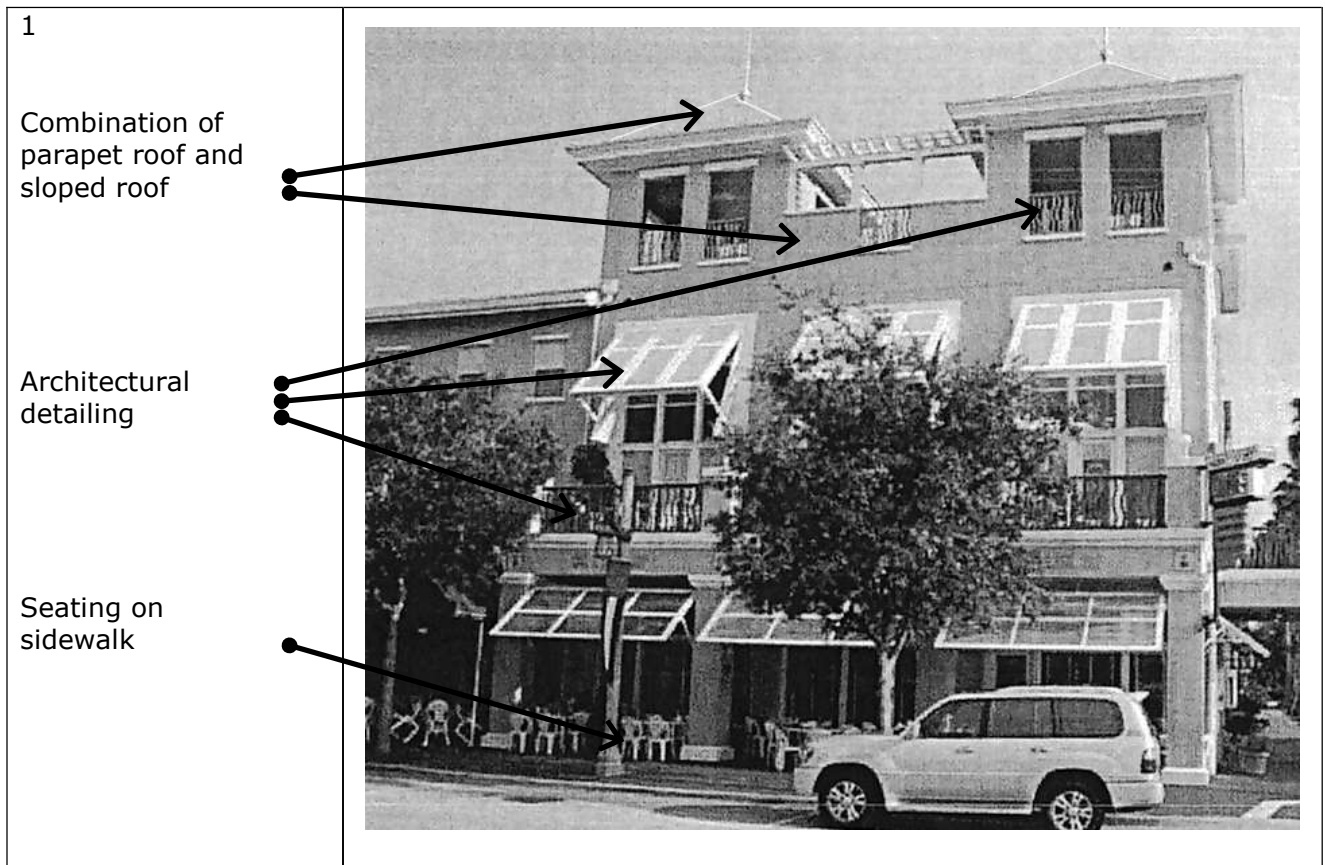
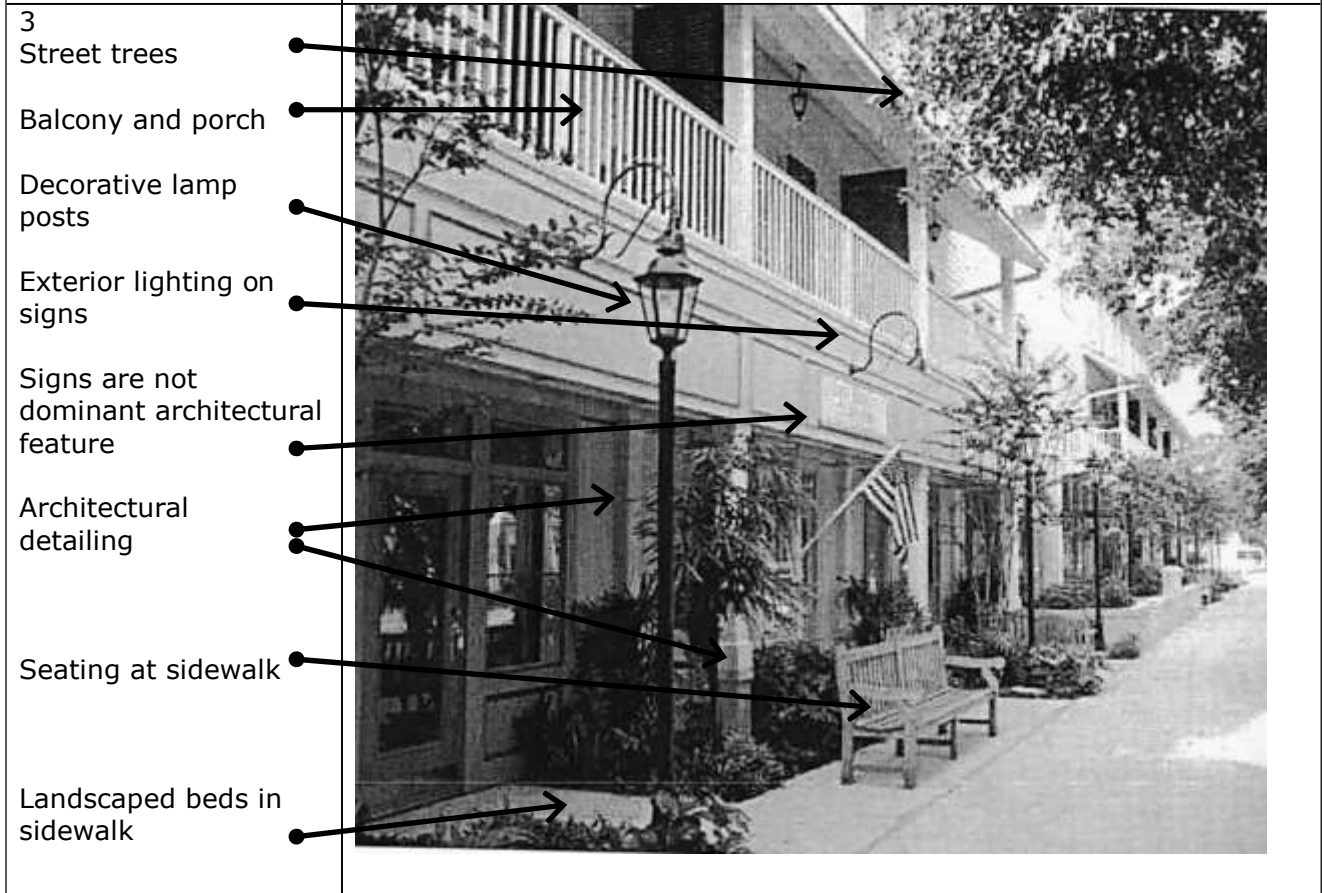
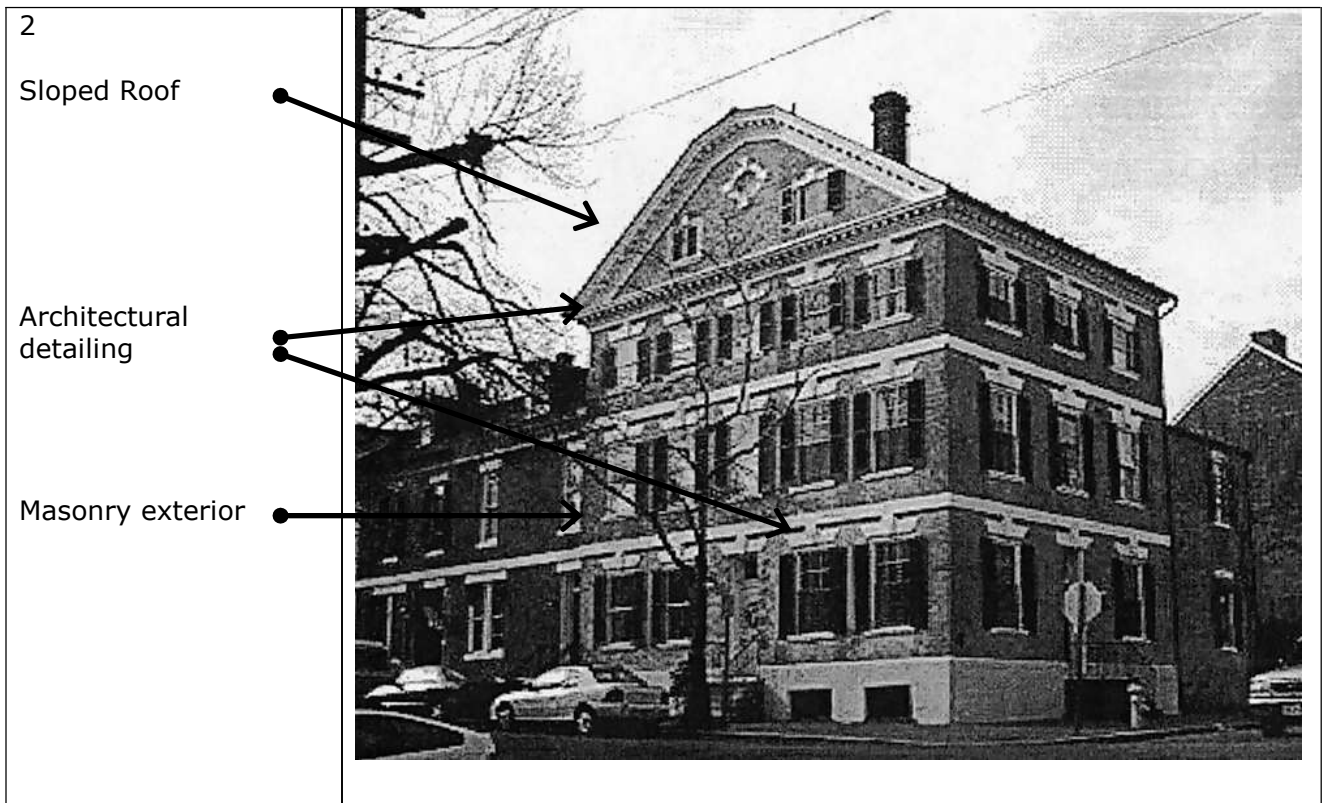


## Appendix A

### Examples of Design Elements: B-1 (General Business District)

The following illustrate particular examples of design elements regulated under the NSS zoning district and are provided **FOR INFORMATIONAL PURPOSES ONLY**. These examples are not adopted as regulations under the Unified Development Code. An applicant is encouraged to refer to the specific requirements relating to the NSS district as adopted in the UDC for specifics.





4

Street trees

Balcony and porch

Decorative lamp posts

Signs are not dominant architectural feature

Architectural detailing

Landscaped beds in sidewalk

Seating at sidewalk



5

Balcony and porch

Street trees

Decorative lamp posts

Exterior lighting on signs

Signs are not dominant architectural feature

Architectural detailing including window mullions, awnings, railings, and arches

Landscaped beds in sidewalk



6

Stone exterior

Sloped roof with architectural shingles

Decorative lamp posts

Street trees

Sidewalk pavers



7

Facade material changes on inside corner - Not outside corner

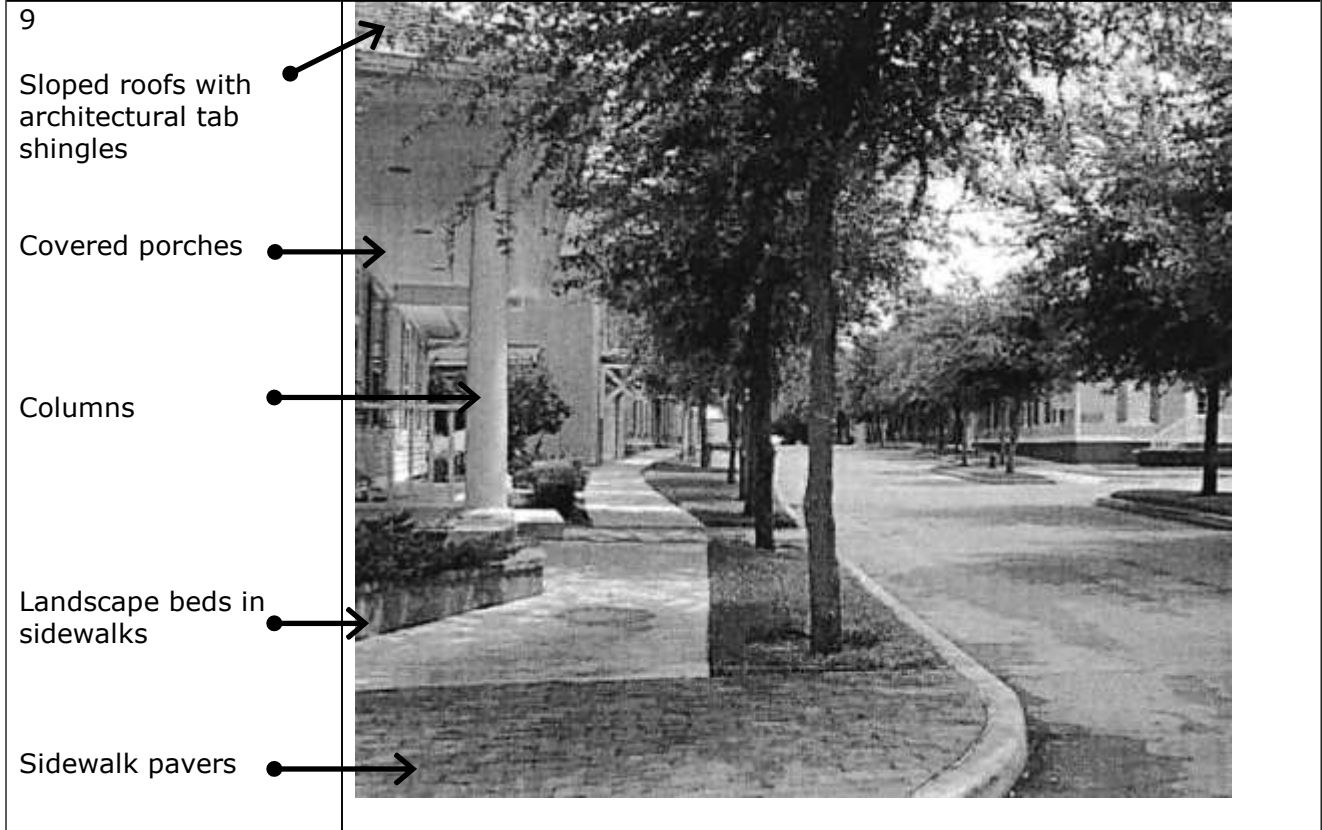
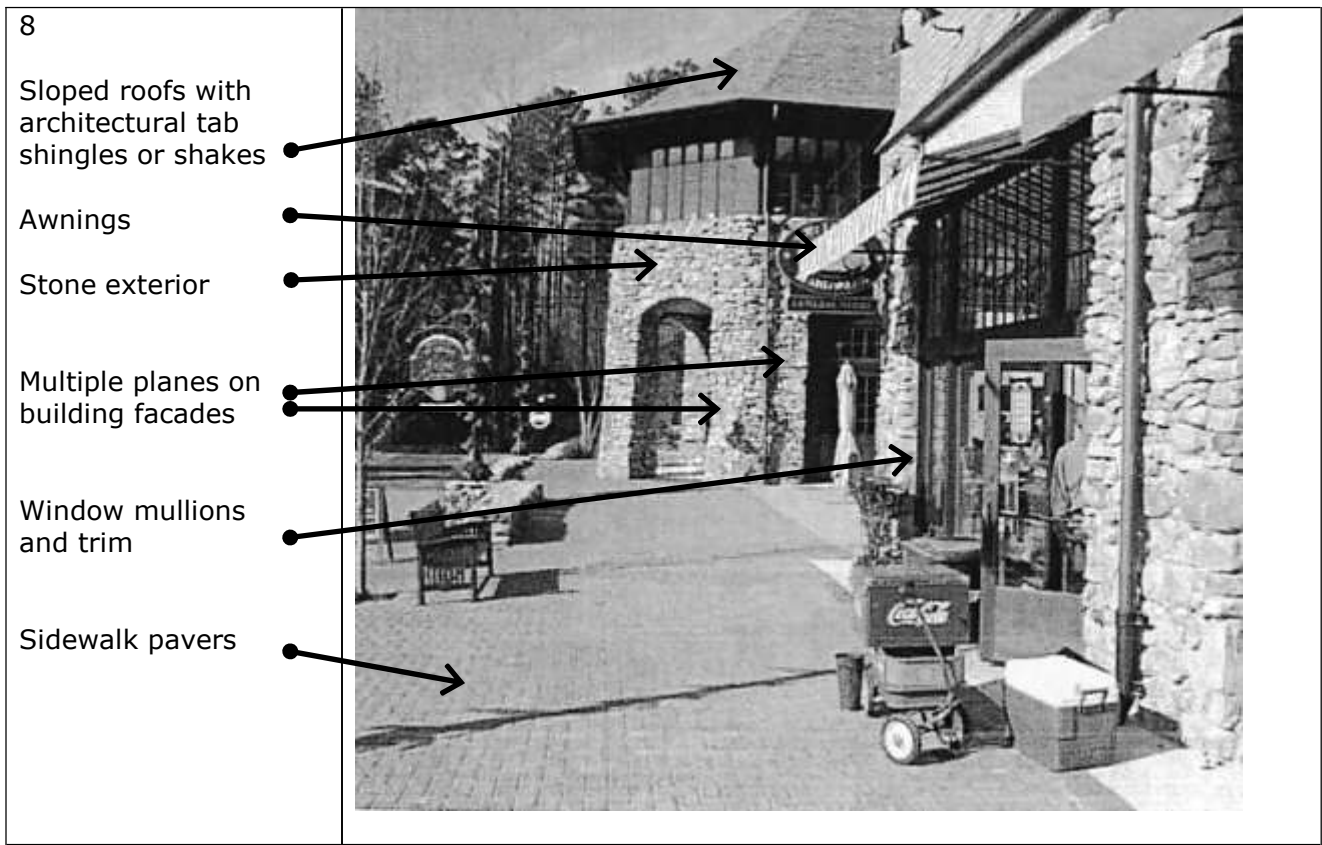
Exterior lighting of signs

Signs are not dominant architectural feature

Architectural detailing of both signs and buildings

Sidewalk pavers





10

Brick exterior

Decorative clock and lamp posts

Planting beds in sidewalks

Outdoor seating

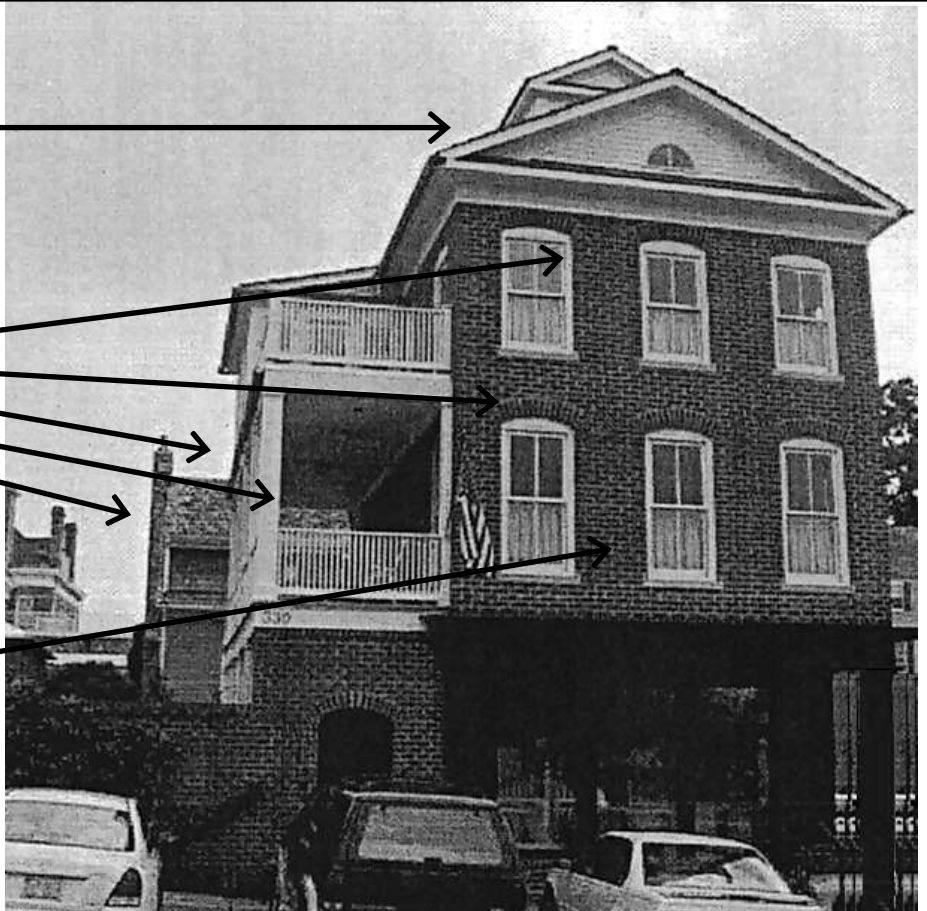


11

Sloped Roofs with architectural tab shingles or shakes

Architectural detailing including window mullions, brick arches, porches, columns, and chimneys

Brick exterior



12

Mix of roof types  
Sloped  
Mansard  
Parapet  
(see text for  
minimum percentage  
of slope by type)

Architectural detailing  
including awnings,  
columns and soffit  
treatment

Street trees



13

Bricked and roofed  
dumpster enclosure  
with architectural  
detailing such as  
columns  
and custom brick  
work.

(Note: set gate posts  
three feet from  
structure per text)

