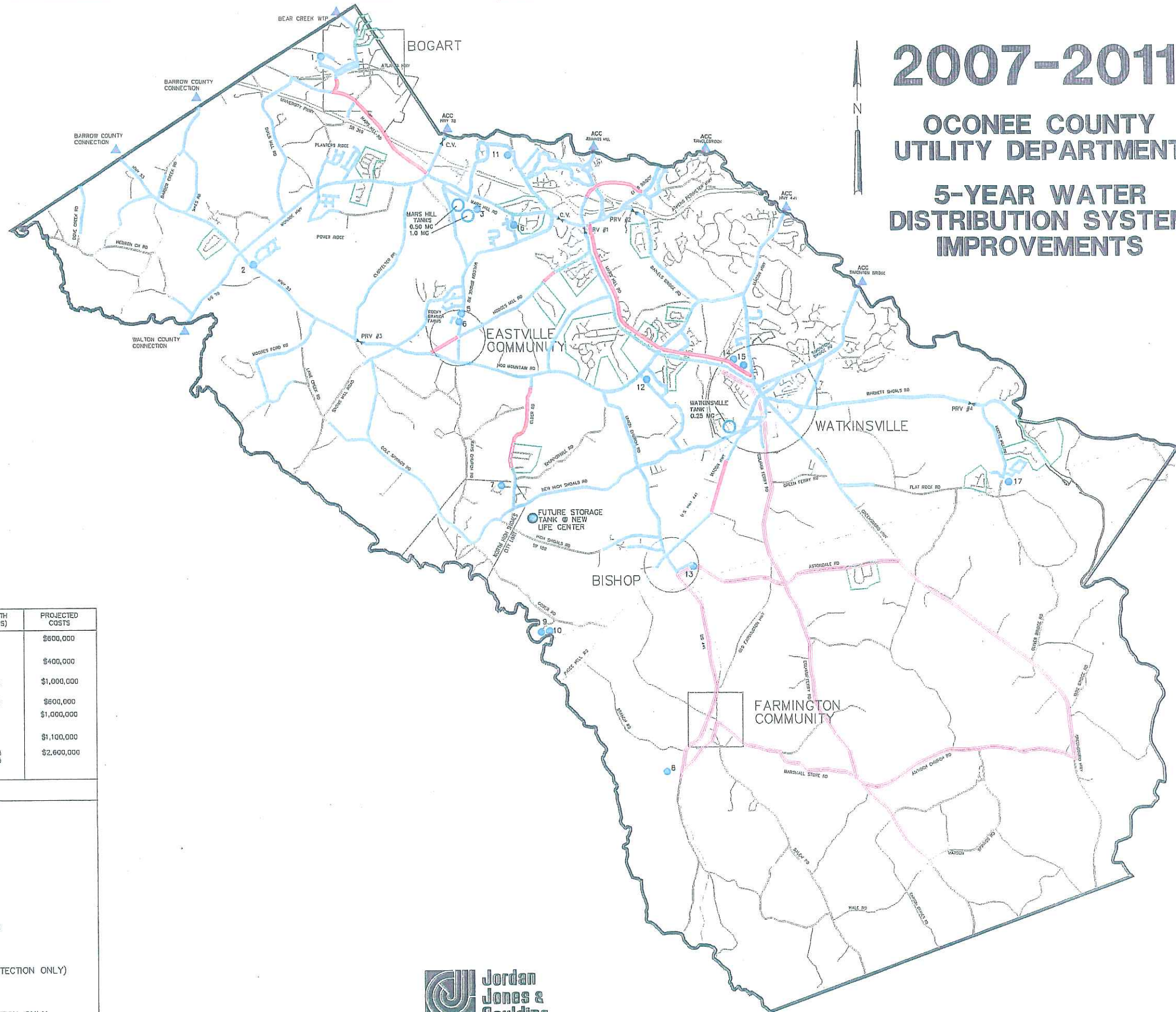


2007-2011

OCONEE COUNTY UTILITY DEPARTMENT

5-YEAR WATER DISTRIBUTION SYSTEM IMPROVEMENTS



PROJECT DESCRIPTION	LENGTH (MILES)	PROJECTED COSTS
HODGES MILL ROAD ELDER ROAD		\$800,000
JENNING MILL PARKWAY (Joint County - DOT)		\$400,000
MARS HILL ROAD WATER MAIN RELOCATION (County - DOT Widening)	4.1	\$1,000,000
MARS HILL ROAD 24' TRANSMISSION	2.5	\$800,000
NEW HIGH SHOALS 1.0 MG ELEVATED STORAGE TANK		\$1,000,000
GREENSBORO HIGHWAY (S.R. 15) [RE-USE]		\$1,100,000
COLHAM FERRY ROAD [RE-USE] ANTIOCH CHURCH ROAD [RE-USE]	6.5 4.5	\$2,600,000

LEGEND

- OCONEE COUNTY LINE
- CITY LIMITS
- ROADS
- CONTROL VALVES
- GROUNDWATER WELL
- FUTURE STORAGE TANK
- SYSTEM INTERCONNECTION
- ELEVATED STORAGE TANKS
- EXISTING WATER SYSTEM
- PROPOSED WATER LINES
- RE-USE WATER (FIRE PROTECTION ONLY)
- PRIVATE WATER SYSTEMS
- RE-USE FOR FIRE PROTECTION ONLY



Jordan
Jones &
Goubling

A. V. GIBSON, COUNTY ENGINEER, MAPS 2005-2010, 11/2005